



WEST VALLEY CLEANUP ALLIANCE, LLC

West Valley Cleanup Alliance, LLC (WVCA) has been awarded the West Valley Demonstration Project (WVDP) Phase 1B Deactivation & Demolition (D&D) Contract by the U.S. Department of Energy's Office of Environmental Management (DOE EM).

WVCA comprises BWXT Technical Services Group, Inc. (BWXT); Amentum Technology, Inc. (Amentum); and Geosyntec Consultants, Inc. (Geosyntec).

- As an incumbent member of the current contractor, BWXT brings cleanup and environmental management capability from numerous DOE sites and nuclear operations experience from its two Category-1 facilities.
- As an incumbent member of the current contractor, Amentum brings advanced technical solutions such as UAV, robotics, sensors, telematics, and other digital tools to safely decommission nuclear facilities.
- As a new member of the project team, Geosyntec brings substantial experience and expertise relevant to executing the Phase 1B D&D project, including geotechnical and geostructural engineering, stormwater management, sediment remediation, and permeable treatment walls.

The three parent companies are joined by two teaming subcontractors: Perma-Fix Environmental Services, Inc. and North Wind Portage, Inc.

- Perma-Fix is an experienced manager of TRU waste, with waste treatment and disposition expertise for the DOE in New York and across the nation.
- North Wind was the DOE small, disadvantaged business of the year in 2021 and brings both D&D and deep radiological remediation experience in New York and nationwide.

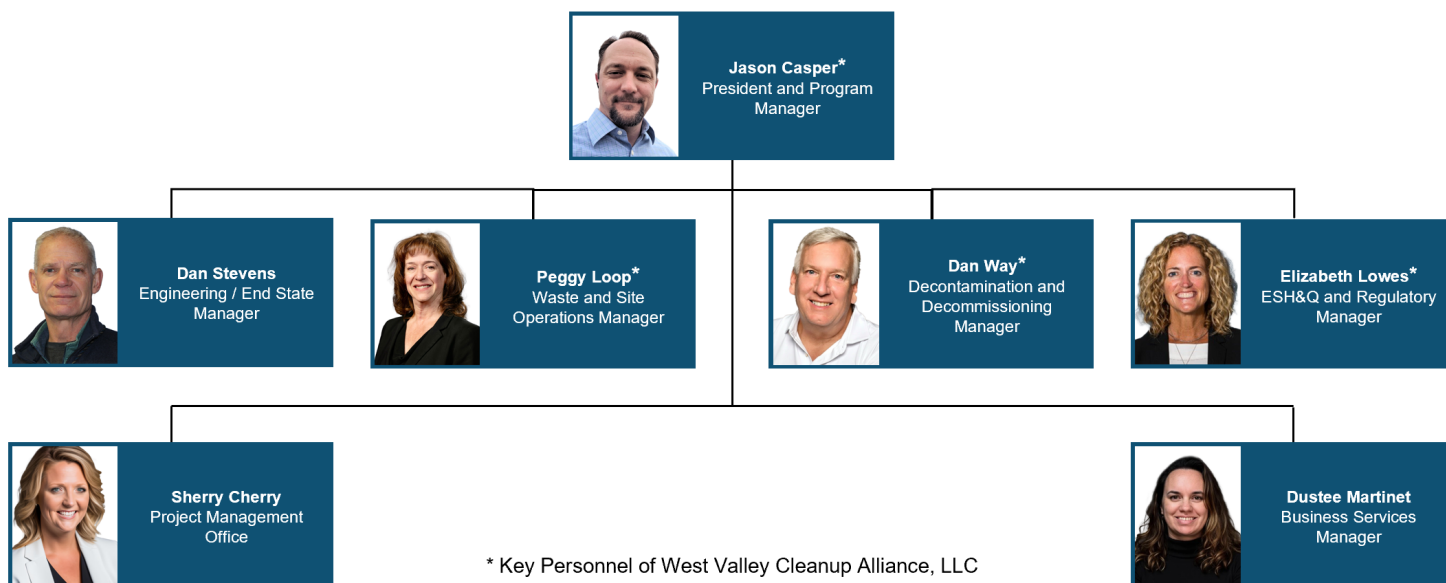
MANAGEMENT APPROACH

WVCA delivers core competencies directly aligned to the DOE's environment management imperatives at WVDP to achieve significant risk and financial liability reduction that provides the best overall optimal solution for accelerated completion and closure.

WVCA's management approach is based on these principles:

- Successfully complete transition through incumbent workforce hiring, transferring systems efficiently, and developing the plans necessary to assume operations.
- Negotiate, manage, implement, and execute multiple simultaneous task orders to accomplish the scope of the contract.
- Partner with the DOE and regulators to achieve end states at WVDP using successful models from other sites and capitalizing on established relationships and innovative ideas brought by new strategic partners.
- Embark on an efficient, low-risk below-grade demolition of main plant structures that is also protective of our workers, the public, and the environment.
- Partnering with the DOE, execute an effective plan to dispose of the roughly 30,000 cubic feet of TRU waste currently stored at WVDP, including the development and issuance of a final waste determination for waste disposition pathways.

ORGANIZATION AND LEADERSHIP



* Key Personnel of West Valley Cleanup Alliance, LLC



SMALL BUSINESS SUBCONTRACTING

Small businesses are a vital part of WVCA's approach to delivering end states at WVDP, as demonstrated by our strategic partnerships with teaming subcontractors Perma-Fix and North Wind.

WVCA commits to subcontract 35% of cumulative task order value to small businesses, providing meaningful work to deliver phase 1B end states. We will fully integrate our master small business plan into the task order management process. We plan to provide access to new subcontractors, offer new work scopes to small businesses, and create subcontracting opportunities in non-traditional roles that are focused on cost-effective delivery.

We will also reinvigorate the small business advocate role to better engage the small business community and collaborate with the task order team to identify small business opportunities with strong technical content. In addition, we remain committed to the existing small businesses at WVDP and will novate existing contracts during transition to provide operational stability and reliability as we move to Phase 1B D&D.

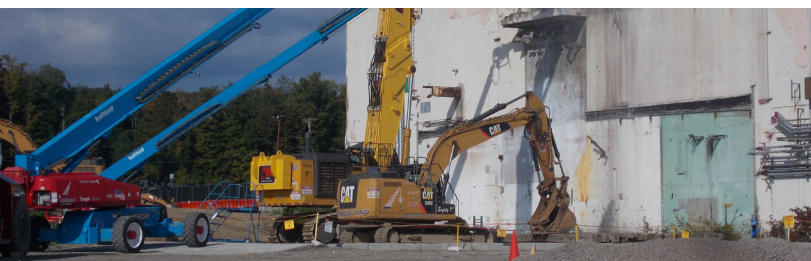
COMMUNITY COMMITMENT

WVCA will continue the commitment to community engagement established by our parent companies and affiliated companies. We recognize there are diverse interests of the region and its stakeholders, and we are committed to engaging regional stakeholders in issues and concerns of mutual interest. Giving back to the community is a worthwhile business practice, and WVCA will commit funding and time to do so.

Our community engagement activities will focus on these primary areas:

- Regional education outreach programs.
- Regional purchasing programs.
- Community support through charitable giving, volunteerism, and other engagement actions.

WVCA will also establish an internal steering committee to ensure that execution of its community commitment plan is closely collaborated with local and regional stakeholders.



CONTRACTOR'S WORK ON SIMILAR PROJECTS

- BWXT brings deactivation and demolition (D&D) experience from 15 government sites and TRU (transuranic) waste expertise from previous work at two DOE sites.
- Amentum and affiliates have remediated more than 25% of DOE's nationwide cleanup footprint, performed D&D on 1,600 excess facilities, and built the largest U.S. groundwater treatment plant.
- Geosyntec is a consulting engineering firm with a geotechnical engineering expertise. It has completed more than 500 relevant projects in New York and is the engineer of record for three DOE disposal cells.



PERFORMANCE COMMITMENTS

Work to be performed under the new WVDP Phase 1B contract will include, but not be limited to, the demolition of remaining near- and below-grade components of the Main Plant Process Building; additional facility deactivation and demolition; contaminated soils remediation and disposition; waste management and legacy waste disposition; safeguards and security; environmental monitoring; surveillance and maintenance; and program support activities.

WVCA will:

- Establish and maintain a joint integrated project team with DOE to maintain a common vision throughout program execution.
- Decrease the time and resources required to negotiate task orders and address current constraints.
- Ensure the full integration of regulatory approvals and stakeholder considerations into project plans and schedules.
- Execute safe and efficient below-grade demolition of main plant structures utilizing both lessons learned from previous above grade demolitions as well as our geotechnical and large-scale soil removal expertise.
- Achieve final disposition of WVDP's TRU waste through appropriate waste stream evaluation, provision of well-defined disposal paths, maximization of commercial disposition facilities where possible, and prevention of generation of new TRU waste.